



## **Research Platform**

# **Production and Conservation in Partnership**

## **RP-PCP**

*Applied research, post-graduate training and expertise on human-nature interactions in the periphery of protected areas: supporting the co-existence of agriculture and conservation in Southern Africa.*

### **Who we are:**

The Research Platform “Production and Conservation in Partnership” (RP-PCP) was established in 2007, formally associating the University of Zimbabwe and the National University of Science and Technology with two French research organisations, Cirad and CNRS, supported by the French Embassy in Harare.

Beginning 2012, the staff involved in the activities of the RP-PCP represented an international multidisciplinary group of more than 50 senior researchers, academics and post-graduate students from a wide range of disciplines, including Social Sciences, Agronomy, Ecology, Geography and Veterinary Sciences.

The RP-PCP has been recognised as one of its 25 “Research Platforms in Partnership” by Cirad.

### **Our objectives:**

The overall objective of the RP-PCP is to contribute to sustainable development, biodiversity conservation and improved rural livelihoods in Southern Africa, through strengthening national research capacities, multidisciplinary approaches and institutional partnerships with a focus on protected areas and neighbouring production.

The RP-PCP seeks to promote applied research on “wild-domestic interfaces” in order to address issues related to the coexistence of Man and Nature, by mitigating development and conservation activities. Our research framework seeks to understand the links between heterogeneity and sustainability of socio-ecological systems in the context of wild-domestic interfaces.

Our multidisciplinary group is organized in four broad thematic areas: Animal Health and Environment (AHE), Ecology (Eco), Conservation and Agriculture (C&A) and Natural Resources Governance and Institutions (NRGI).

The platform has selected 3 priority areas of activities which include Transfrontier Conservation Areas (TFCAs) and their peripheries: Gonarezhou NP in the GLTFCA, Hwange NP in the KAZA-TFCA and the mid-Zambezi valley/Lower Zambezi-Mana Pools TFCA (see map).

## **Key achievements**

Since its beginning, as a research platform, the RP-PCP aims at promoting applied scientific studies through support to post-graduate students, the vast majority of them being Zimbabwean. So far, 28 postgraduate students have been/still are supervised under the RP-PCP since its inception in 2007, including 20 Zimbabweans (>10 students have graduated or submitted their thesis since 2007). All together, they have produced 26 research articles, 3 book chapters and numerous (>50) communications during international conferences and regional workshops. Some technical and expertise reports have also been produced.

## **Student Project examples:**

Mugabe, L. 2009. *Making sense of the Great Limpopo Trans-frontier Conservation Area in Zimbabwe: an attempt to use scenario planning tools to understand livelihood options in Beitbridgedistrict*. MSc thesis, Faculty of Social Studies, Centre for Applied Social sciences, University of Zimbabwe.

Baudron, F. 2011. *Integrated evaluation of CA technology using MGL to improve productivity and sustainability of cotton-cereal system in the Mid Zambezi Valley*. PhD, University of Wagenigen.

Ncube, H. submitted. *Limitations of recruitment in medium sized herbivores: population dynamics of the plains zebra *Equus quagga chapmani* in Hwange National Park*. MPhil thesis, Faculty of Sciences, National University of Science and Technology.

Guerbois, C., on-going. *Integrated and sustainable management of African wildlife through protected areas. Developing modelling tools for exploring scenarios and decision making*. PhD, University of Lyon 1.

Zengeya, F., on-going. *Understanding the distribution of cattle at the livestock-wildlife interface using real-time Global Positioning Systems (GPS) and satellite remotely sensed data*. PhD, Department of Geography and Environmental Science, Uni. Of Zimbabwe.

Biko, G., on-going. *A survey of Brucellosis and bovine tuberculosis in humans at a wildlife/domestic animal/human interface in Zimbabwe*. MPhil, Faculty of Veterinary Science, Uni. Of Zimbabwe.

## **Funding:**

The French Embassy in Zimbabwe has been supporting the RP-PCP since its implementation and provides the core of the funding. Co-funding of studies/expertise is also done by members of the RP-PCP for the benefits of various projects coordinated by one of the partner institutions: EU-PARSEL coordinated by CIRAD, EU-LIFIN coordinated by Action Contre la Faim, ANR-FEAR coordinated by CNRS, WATERNET via UZ, FAO-DNPWMA/Human-Wildlife-Conflicts and GLTFCA/Buffalo-Cattle mobility via CIRAD, MAEE-GRIPAVI and MAEE-CORUS FMD coordinated by CIRAD.

## Contacts:

- Prof. E. Mwenje, Chairman of Scientific Steering Committee: [emwenje@nust.ac.zw](mailto:emwenje@nust.ac.zw); Tel. +263 712881755
- Dr M. de Garine Wichatitsky, Coordinator : [degarine@cirad.fr](mailto:degarine@cirad.fr); Tel: +263 4332485/7; Mob +263 773208023

## Liens:

[http://afrique-orientale-australe.cirad.fr/recherche\\_en\\_partenariat/dispositifs\\_de\\_recherche\\_en\\_partenariat/produire\\_et\\_conserver\\_en\\_partenariat](http://afrique-orientale-australe.cirad.fr/recherche_en_partenariat/dispositifs_de_recherche_en_partenariat/produire_et_conserver_en_partenariat)

(soon on-line: [www.rp-pcp.com](http://www.rp-pcp.com))

<http://www.cirad.fr/>

<http://www.uz.ac.zw/>

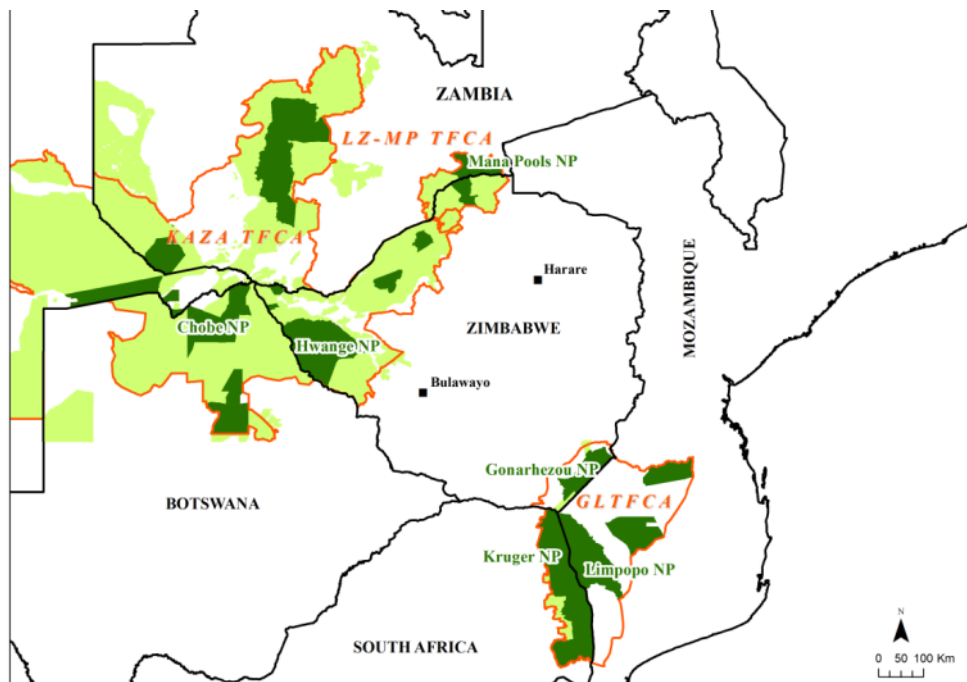
<http://www.cnrs.fr/>

<http://www.nust.ac.zw/>

<http://www.ambafrance-zw.org/>



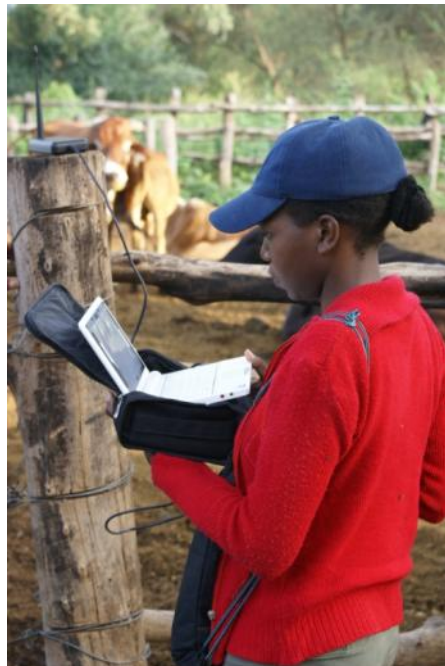
## A few illustrations:



Zimbabwe and The TFCAs the country shares with its neighbours (@ Laure Guerrini)



Technical veterinary officer discussing with small-scale farmers about grazing areas and watering points in the periphery of the Gonarezhou National Parks.



A RP-PCP student downloading GPS points from collars on cattle to understand their daily movements.





A donkey carcass eaten by a lion: human-wildlife conflicts are important in the periphery of protected areas.



A critical water points for both cattle and wildlife: on one side is the communal land on the other side (visible here) starts the national park.